

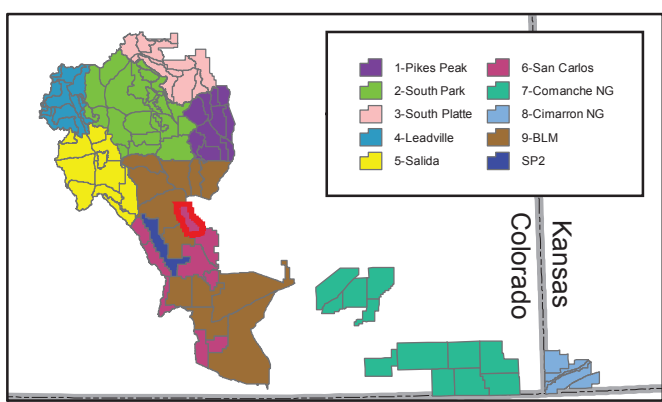
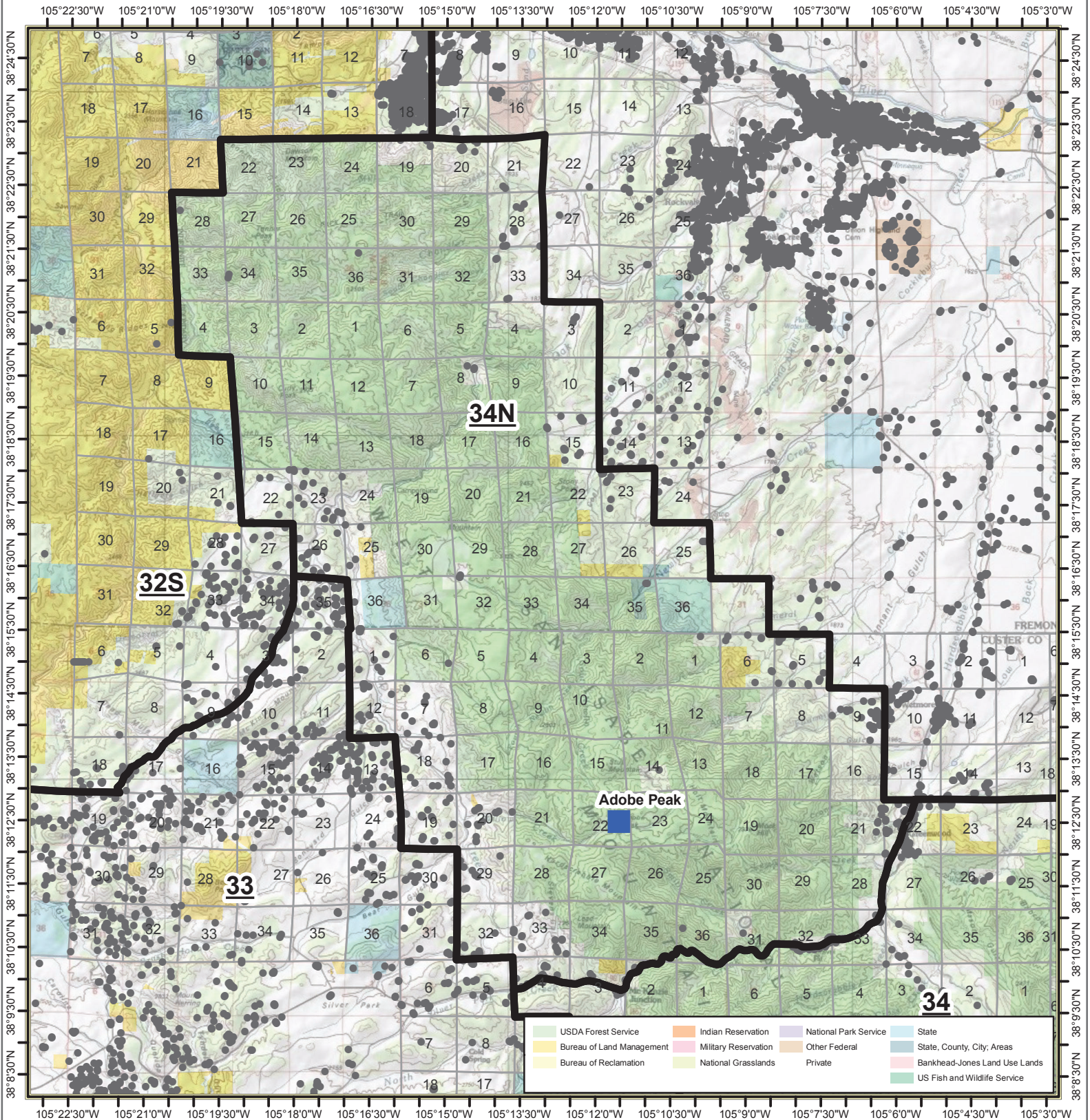
34-Scraggy Peaks

Page 63 of 101

- Structures
- Base-DIRECT
- Repeater
- Response Areas
- RAWs Stations
- Fire Protection Districts



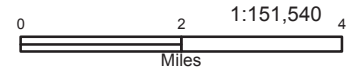
Date: 7/8/2019



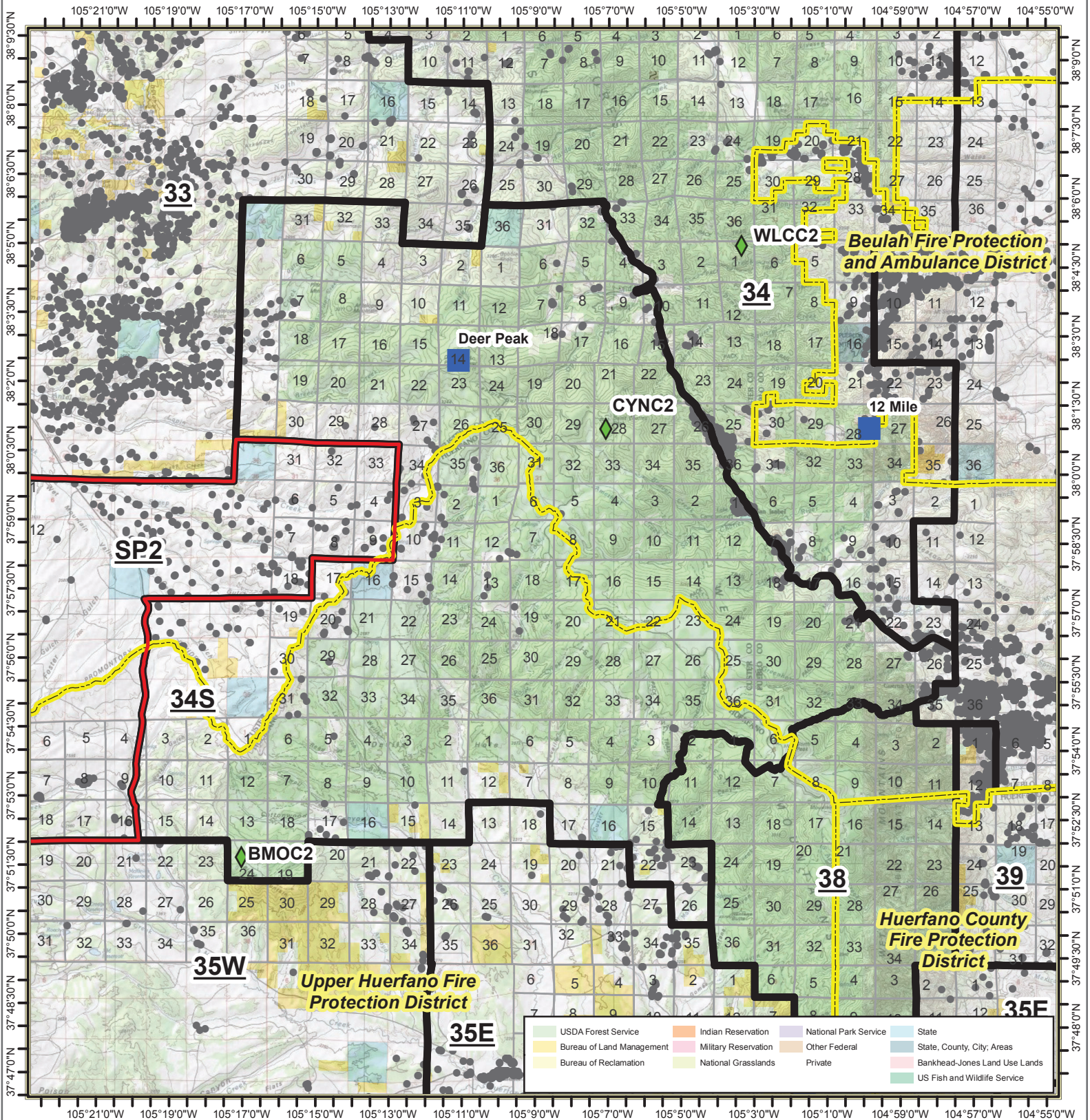
34N-Newlin Creek

Page 64 of 101

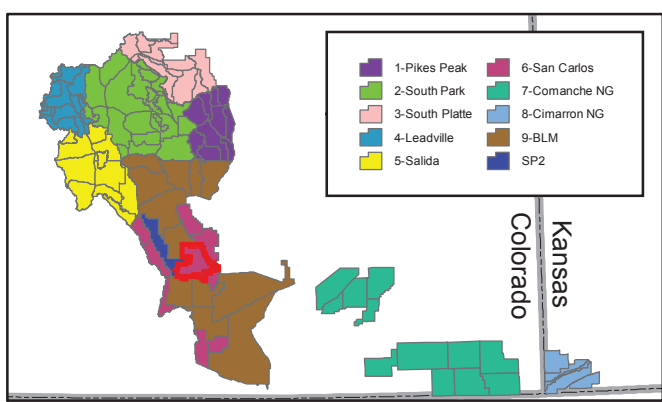
- Structures
- Base-DIRECT
- Repeater
- Response Areas
- ◆ RAWS Stations
- Fire Protection Districts



Date: 7/8/2019



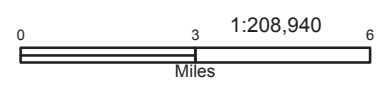
USDA Forest Service	Indian Reservation	National Park Service	State
Bureau of Land Management	Military Reservation	Other Federal	State, County, City, Areas
Bureau of Reclamation	National Grasslands	Private	Bankhead-Jones Land Use Lands
			US Fish and Wildlife Service



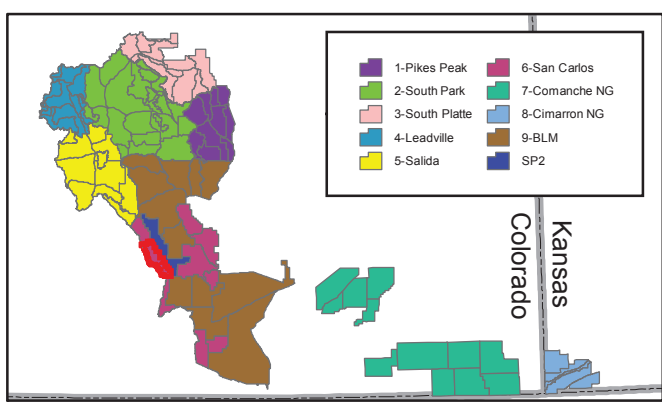
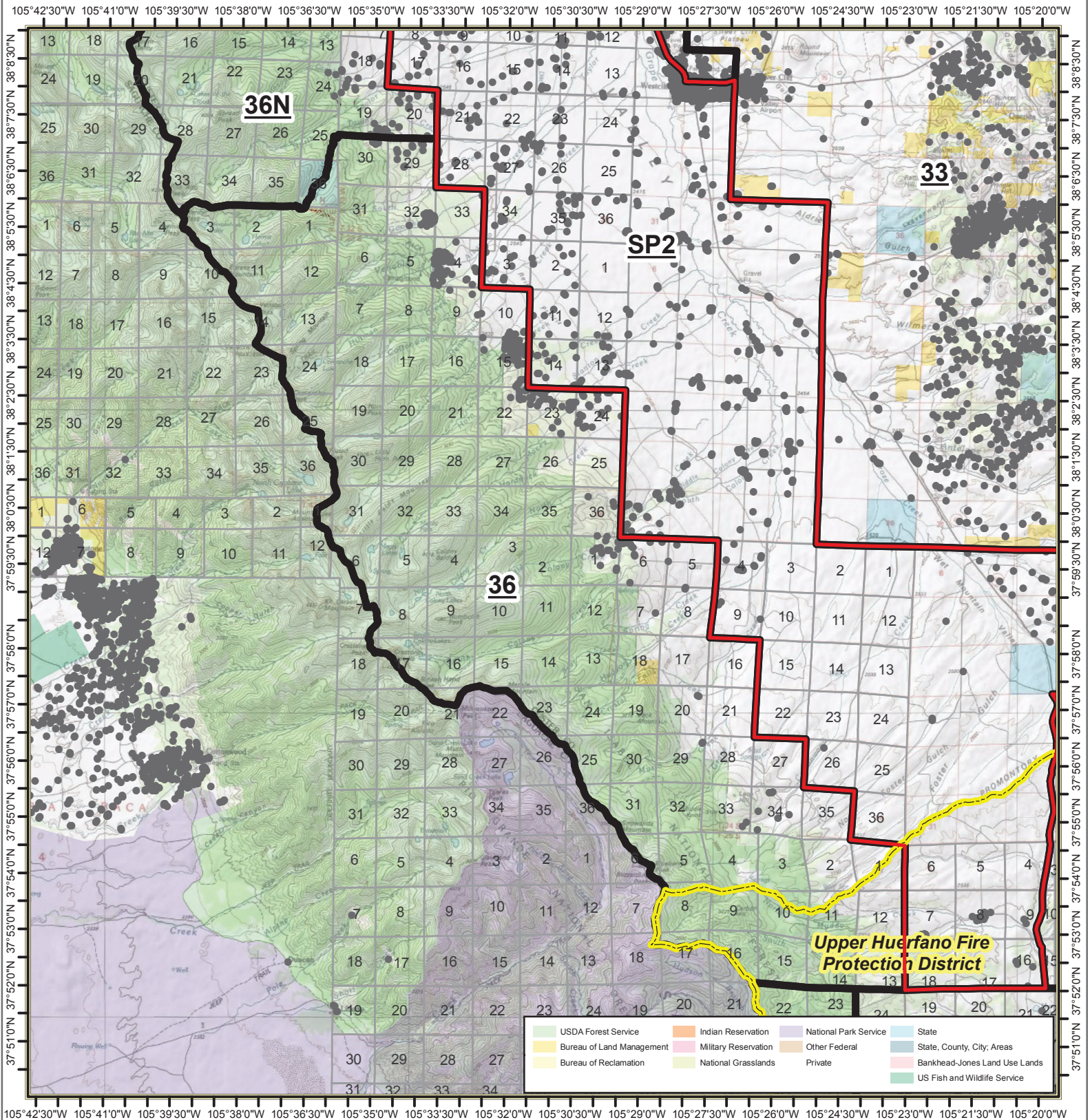
34S-Saint Charles Peak

Page 65 of 101

- Structures
- Base-DIRECT
- Repeater
- Response Areas
- ◆ RAWS Stations
- Fire Protection Districts



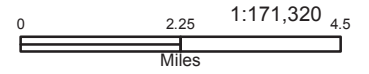
Date: 7/8/2019



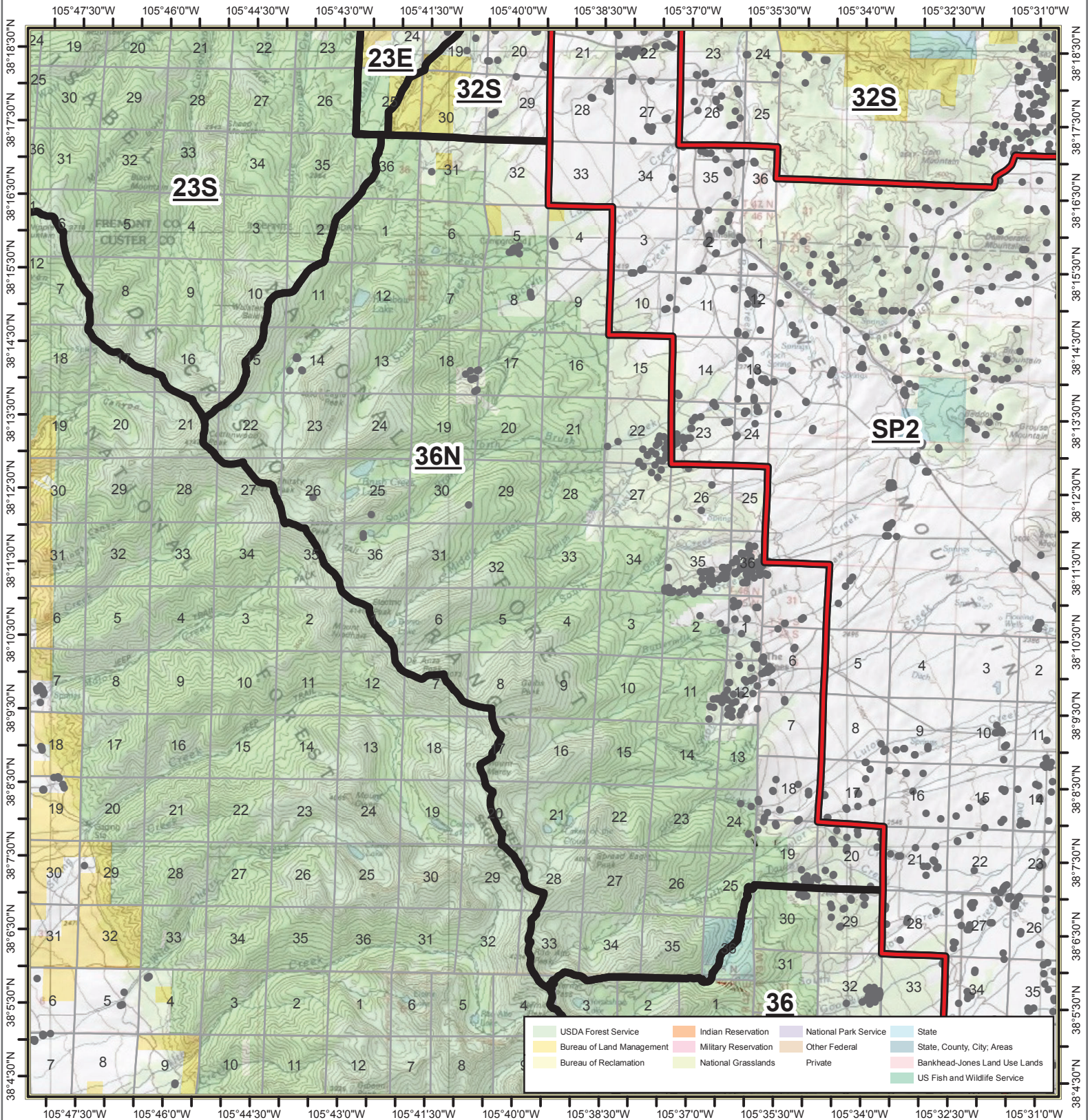
36-Humboldt Peak

Page 66 of 101

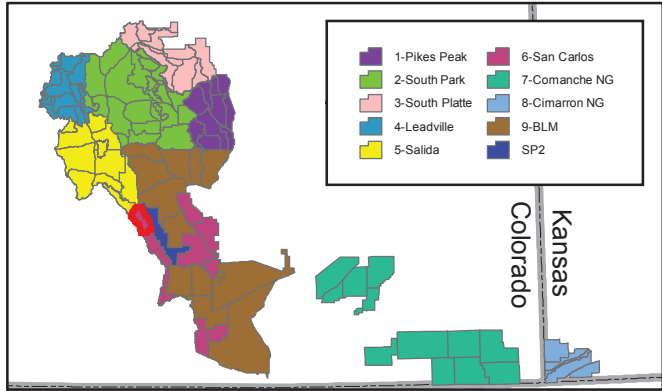
- Structures
- Base-DIRECT
- Repeater
- Response Areas
- ◆ RAWS Stations
- Fire Protection Districts



Date: 7/8/2019



	USDA Forest Service		Indian Reservation		National Park Service		State
	Bureau of Land Management		Military Reservation		Other Federal		State, County, City, Areas
	Bureau of Reclamation		National Grasslands		Private		Bankhead-Jones Land Use Lands
							US Fish and Wildlife Service



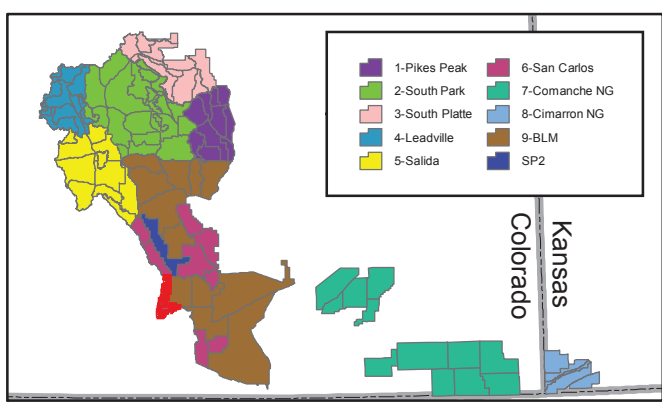
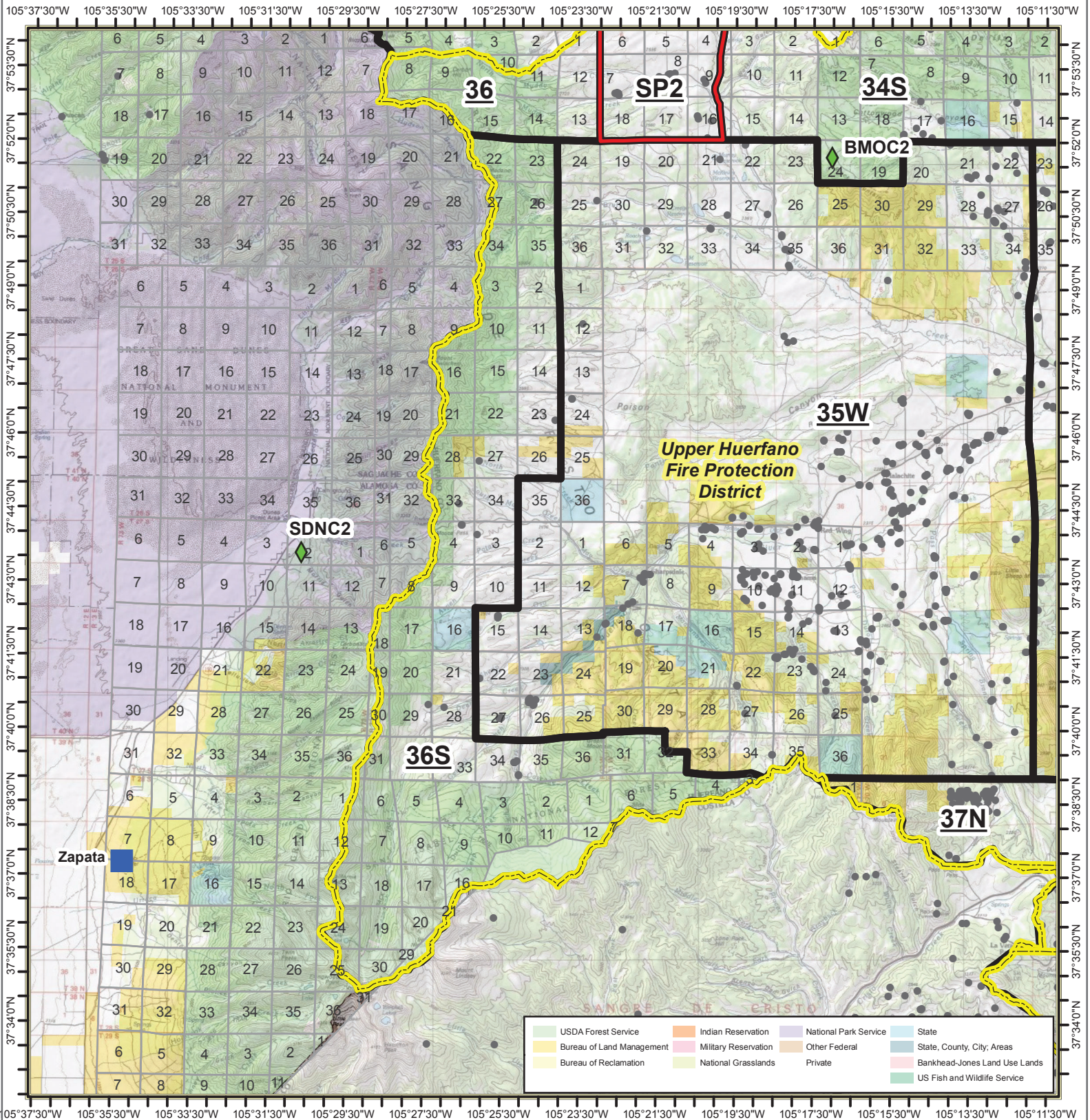
36N-Eagle Peak

Page 67 of 101

- Structures
- Base-DIRECT
- Repeater
- Response Areas
- RAWS Stations
- Fire Protection Districts



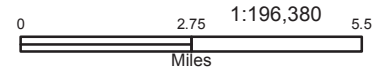
Date: 7/8/2019



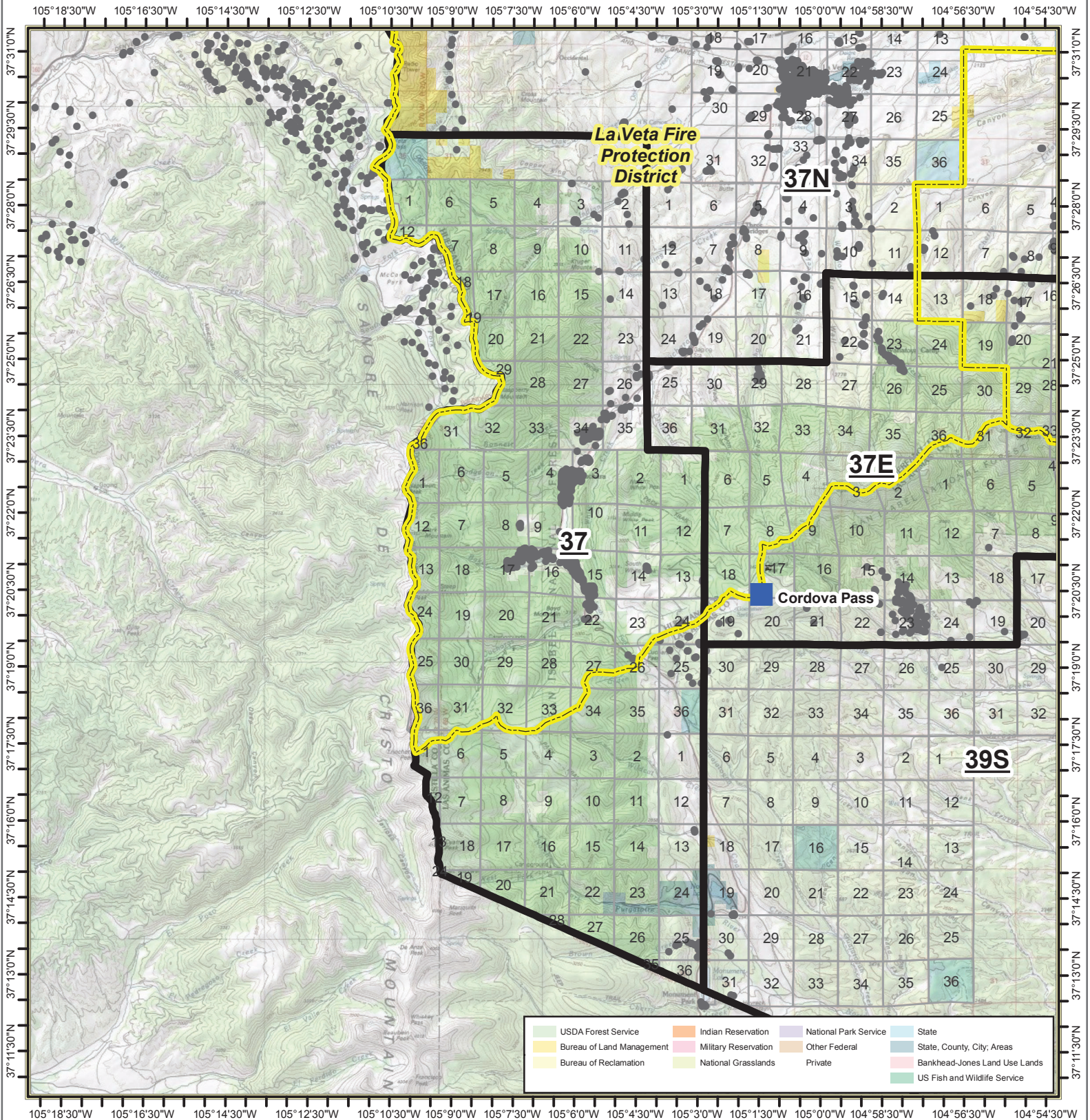
36S-Carbonate Mountain

Page 68 of 101

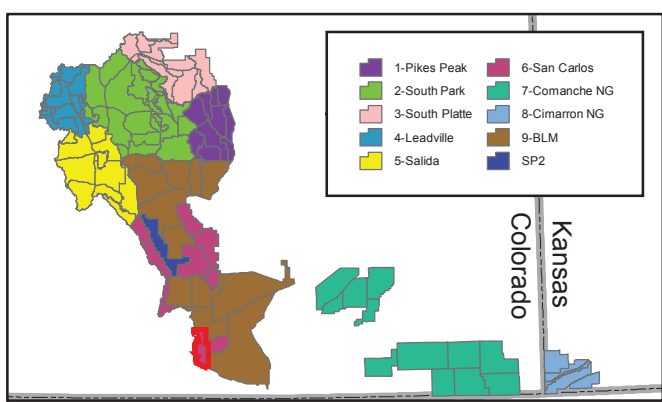
- Structures
- Base-DIRECT
- Repeater
- Response Areas
- ◆ RAWS Stations
- Fire Protection Districts



Date: 7/8/2019



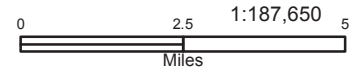
USDA Forest Service	Indian Reservation	National Park Service	State
Bureau of Land Management	Military Reservation	Other Federal	State, County, City, Areas
Bureau of Reclamation	National Grasslands	Private	Bankhead-Jones Land Use Lands
			US Fish and Wildlife Service



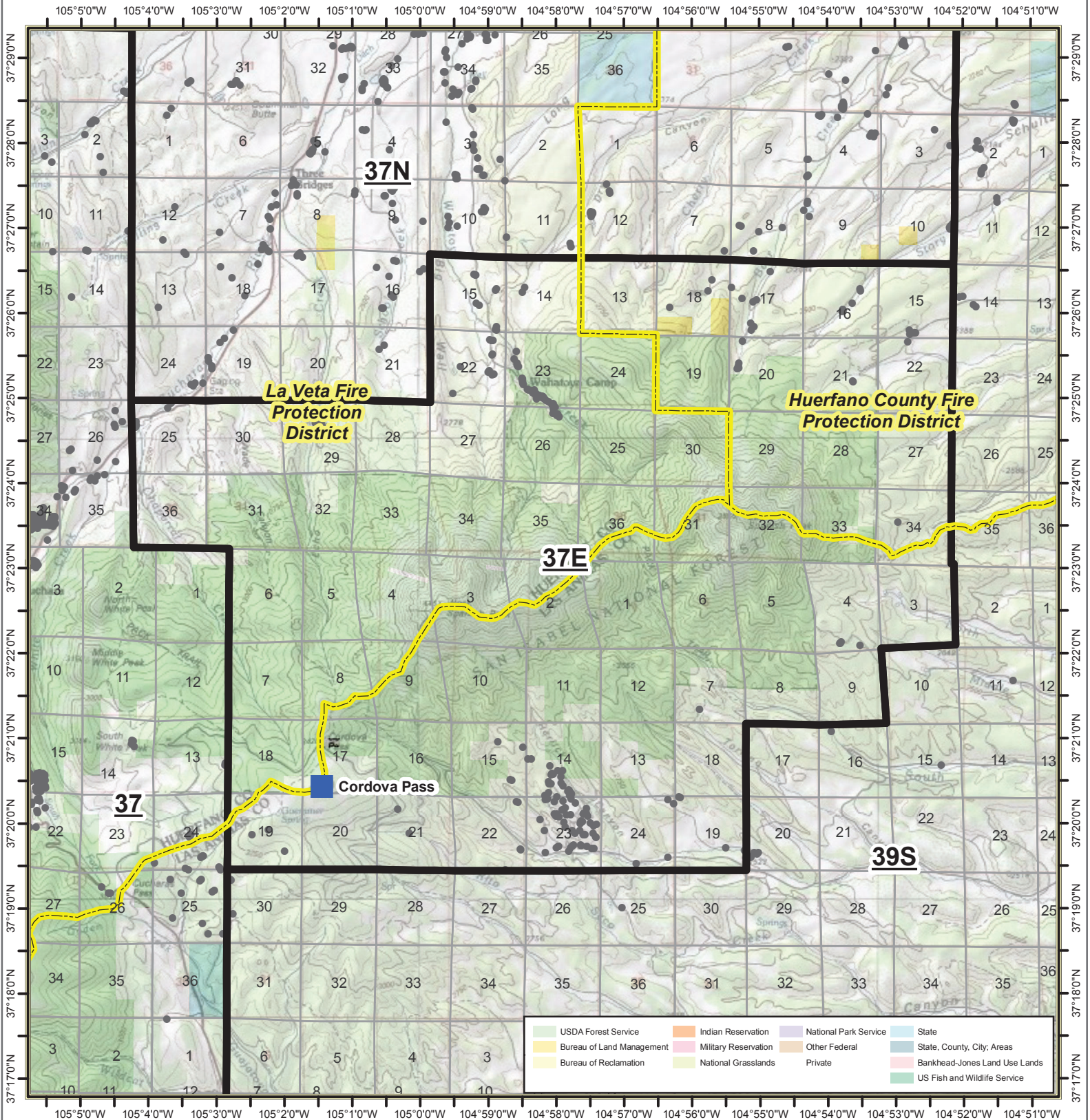
37-Cuchara

Page 69 of 101

- Structures
- Base-DIRECT
- Repeater
- Response Areas
- ◆ RAWS Stations
- Fire Protection Districts



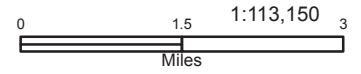
Date: 7/8/2019



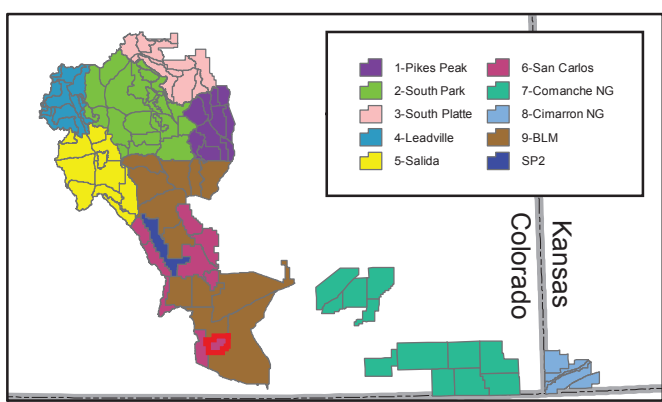
37E-East Spanish Peak

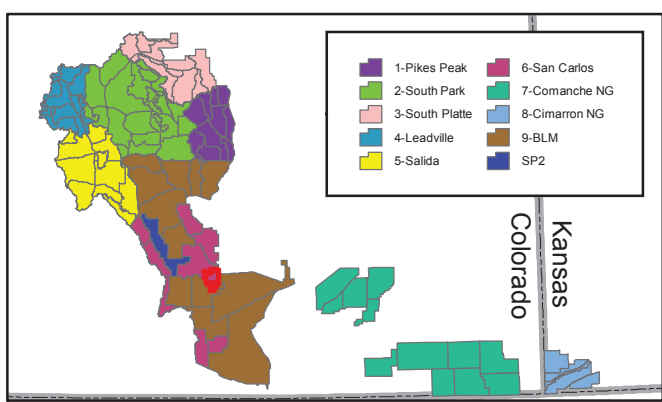
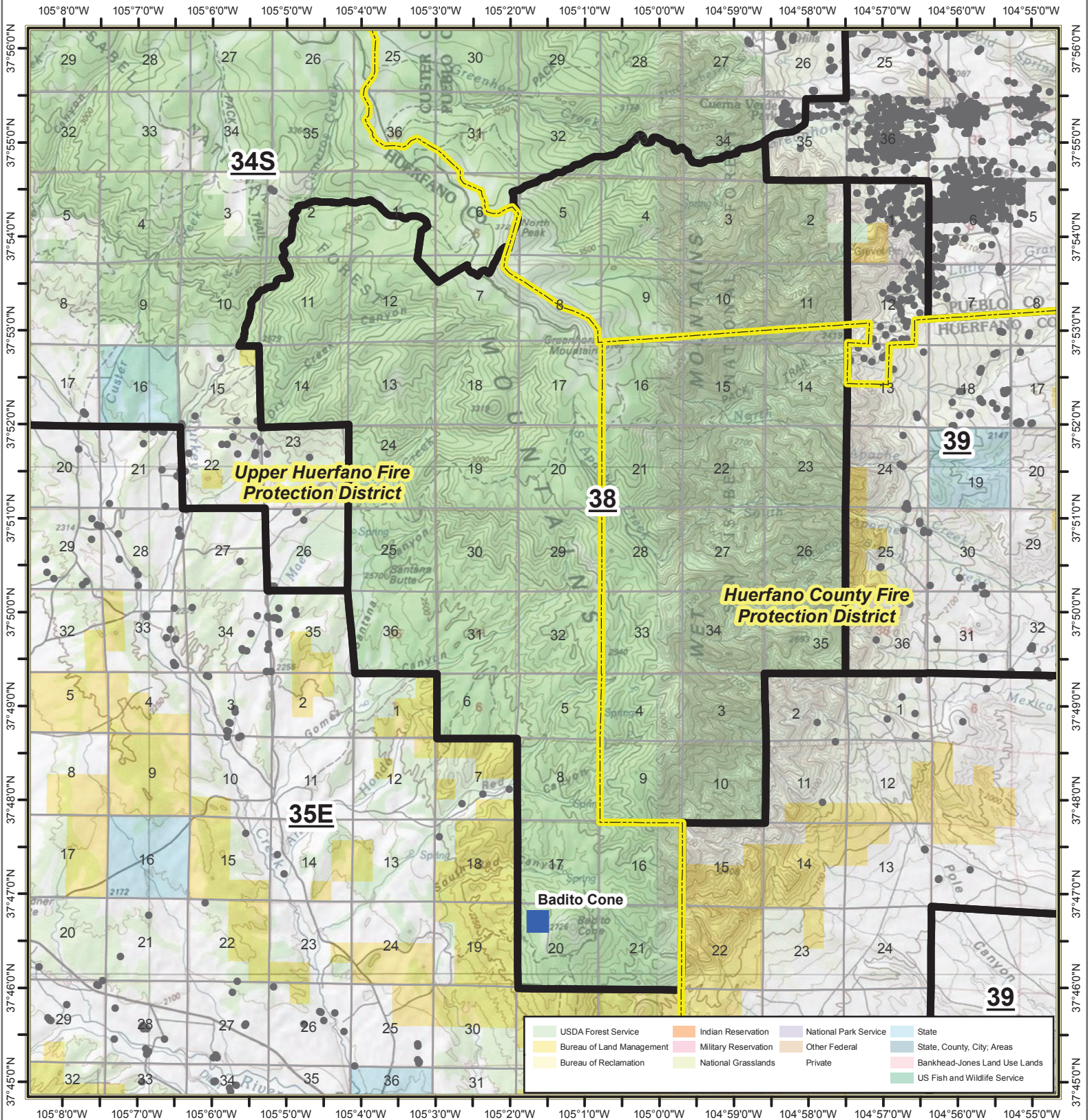
Page 70 of 101

- Structures
- Base-DIRECT
- Repeater
- Response Areas
- ◆ RAWS Stations
- Fire Protection Districts



Date: 7/8/2019

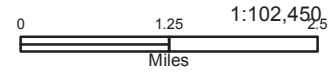




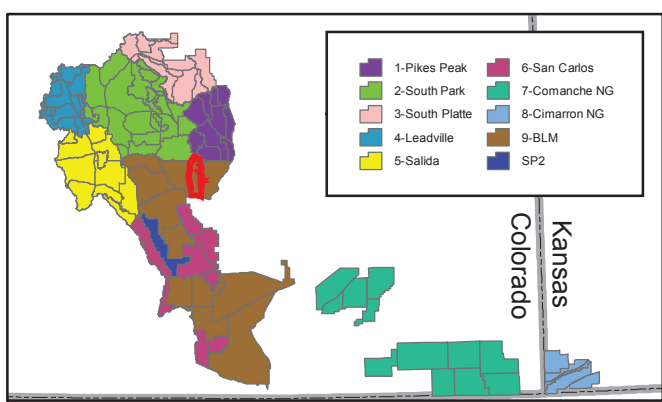
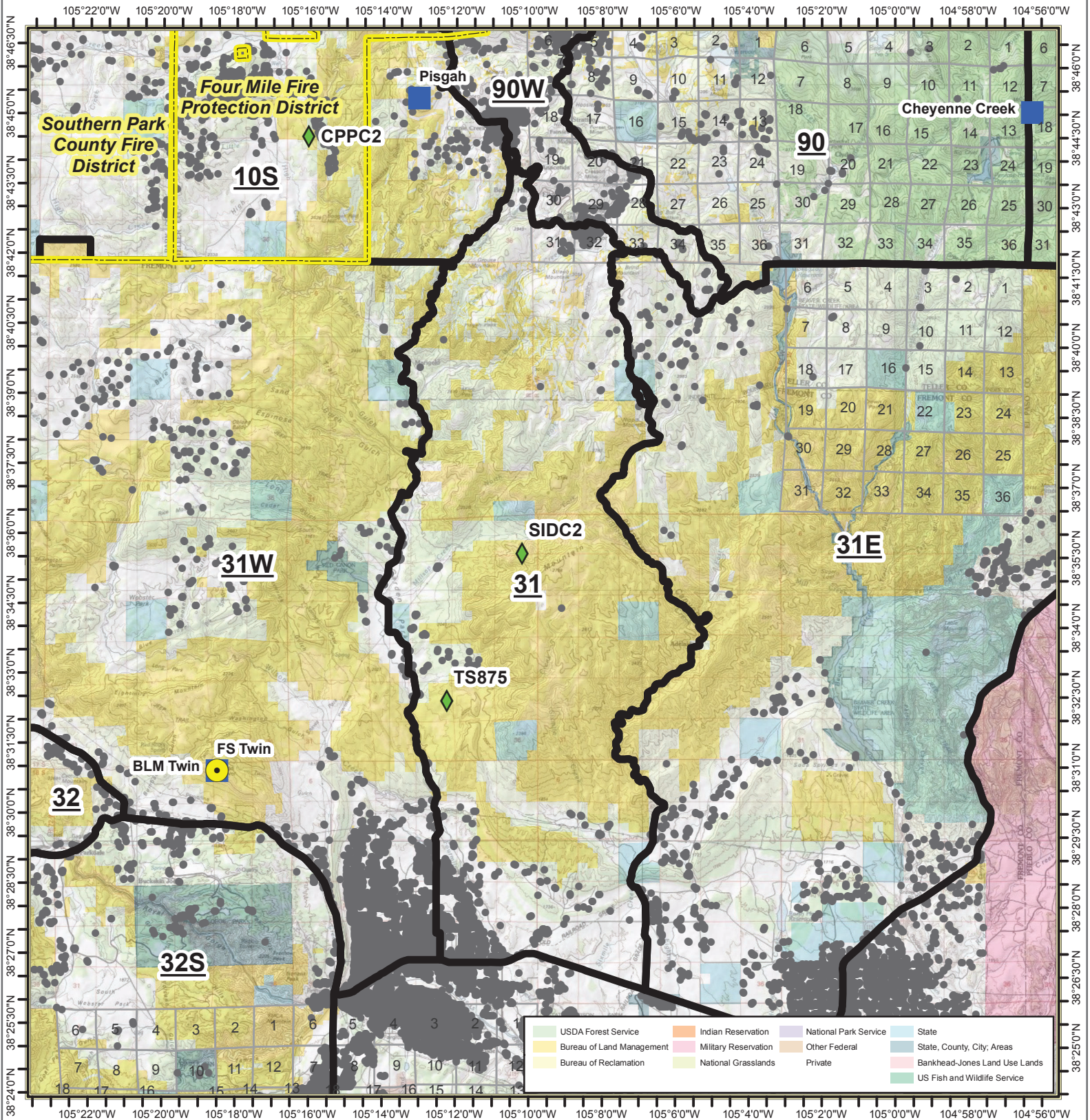
38-Greenhorn Mountain

Page 71 of 101

- Structures
- Base-DIRECT
- Repeater
- Response Areas
- ◆ RAWS Stations
- Fire Protection Districts



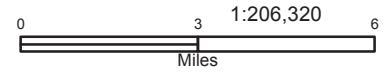
Date: 7/8/2019



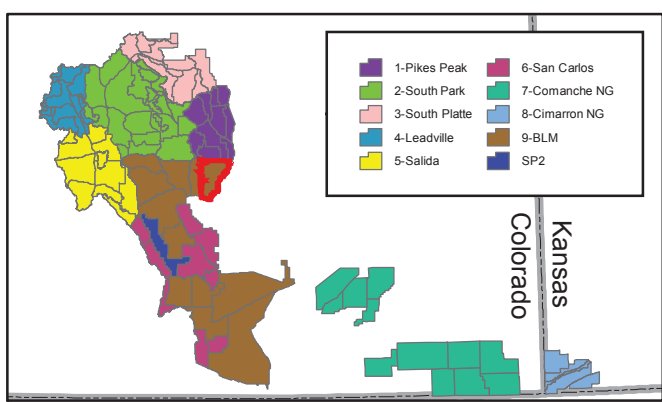
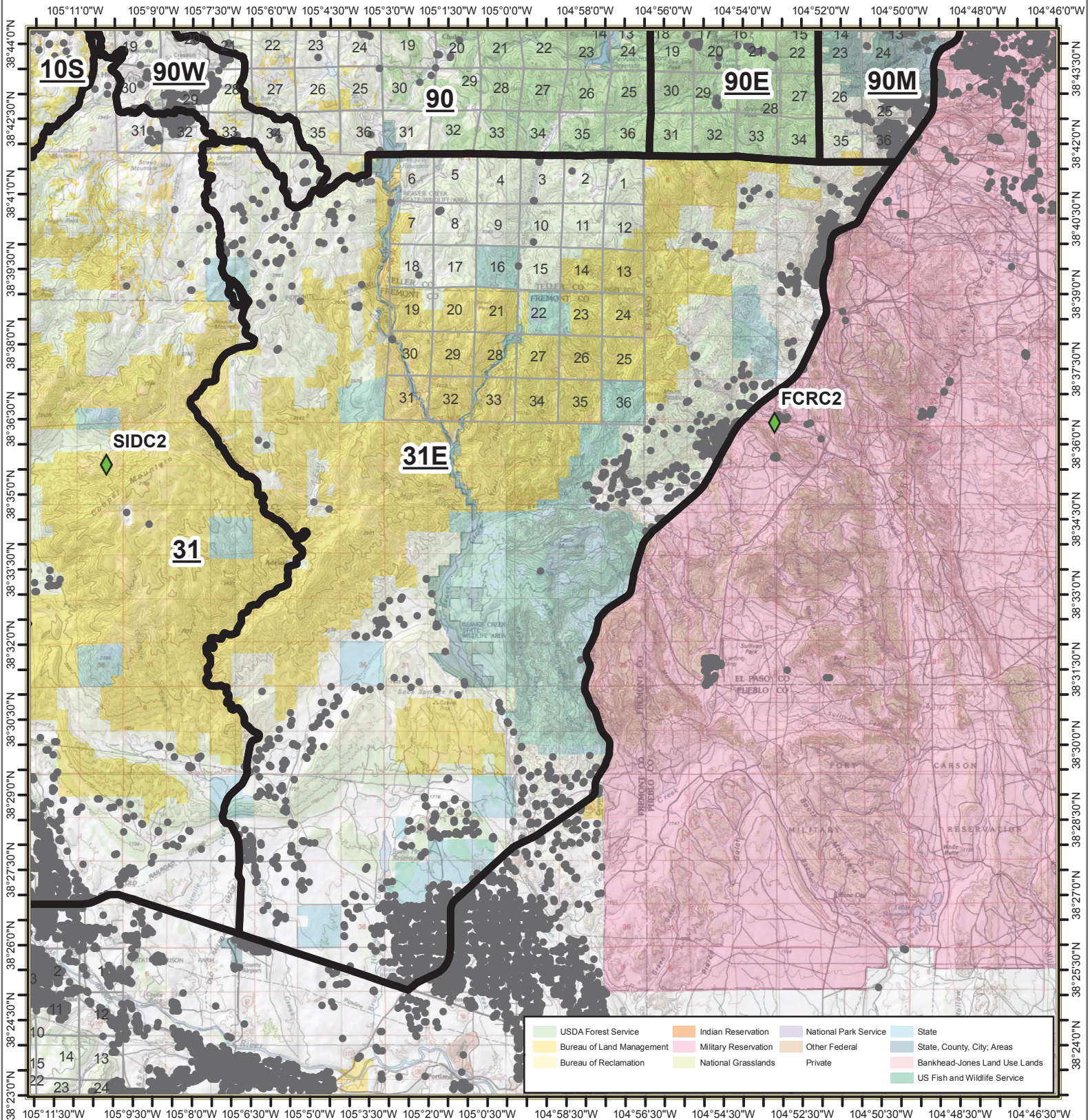
31-Cooper Mountain

Page 89 of 101

- Structures
- Base-DIRECT
- Repeater
- Response Areas
- ◆ RAWS Stations
- Fire Protection Districts



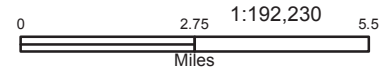
Date: 7/8/2019



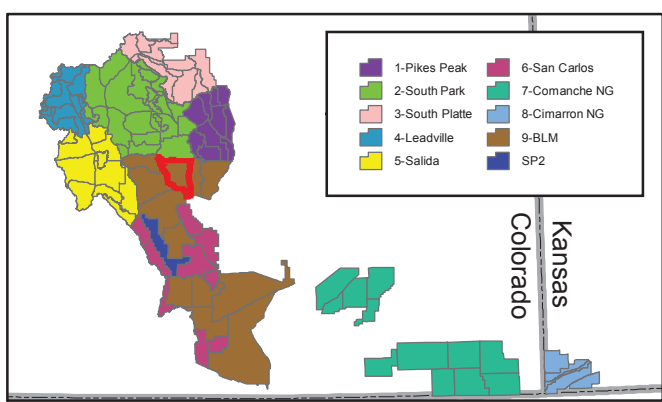
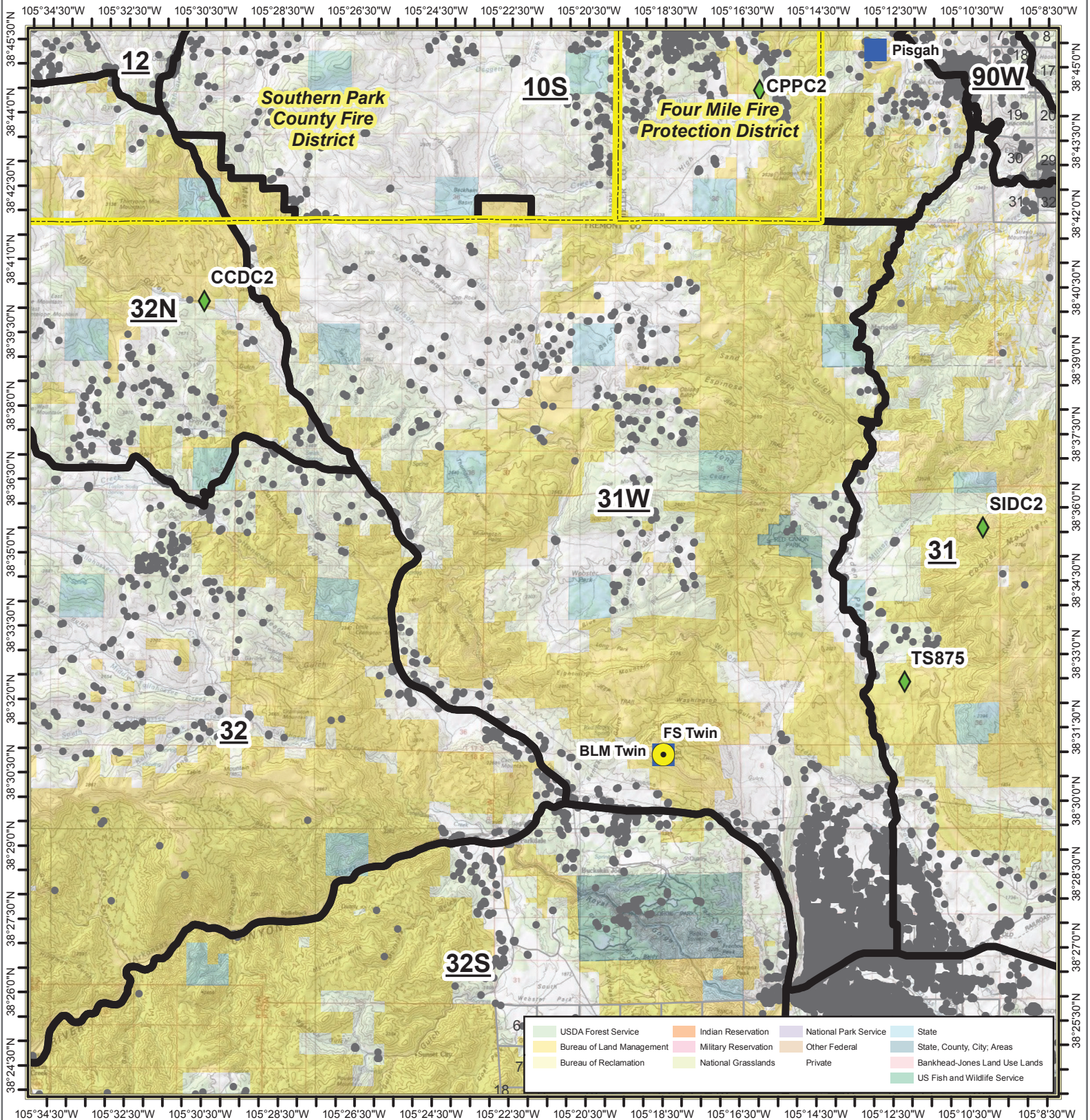
31E-Phantom Canyon

Page 90 of 101

- Structures
- Base-DIRECT
- Repeater
- Response Areas
- ◆ RAWS Stations
- Fire Protection Districts



Date: 7/8/2019



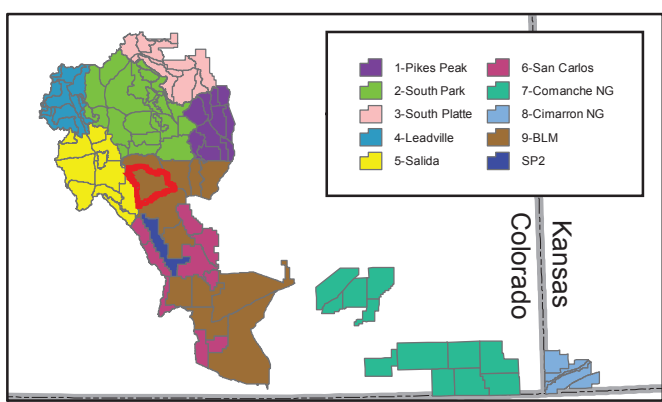
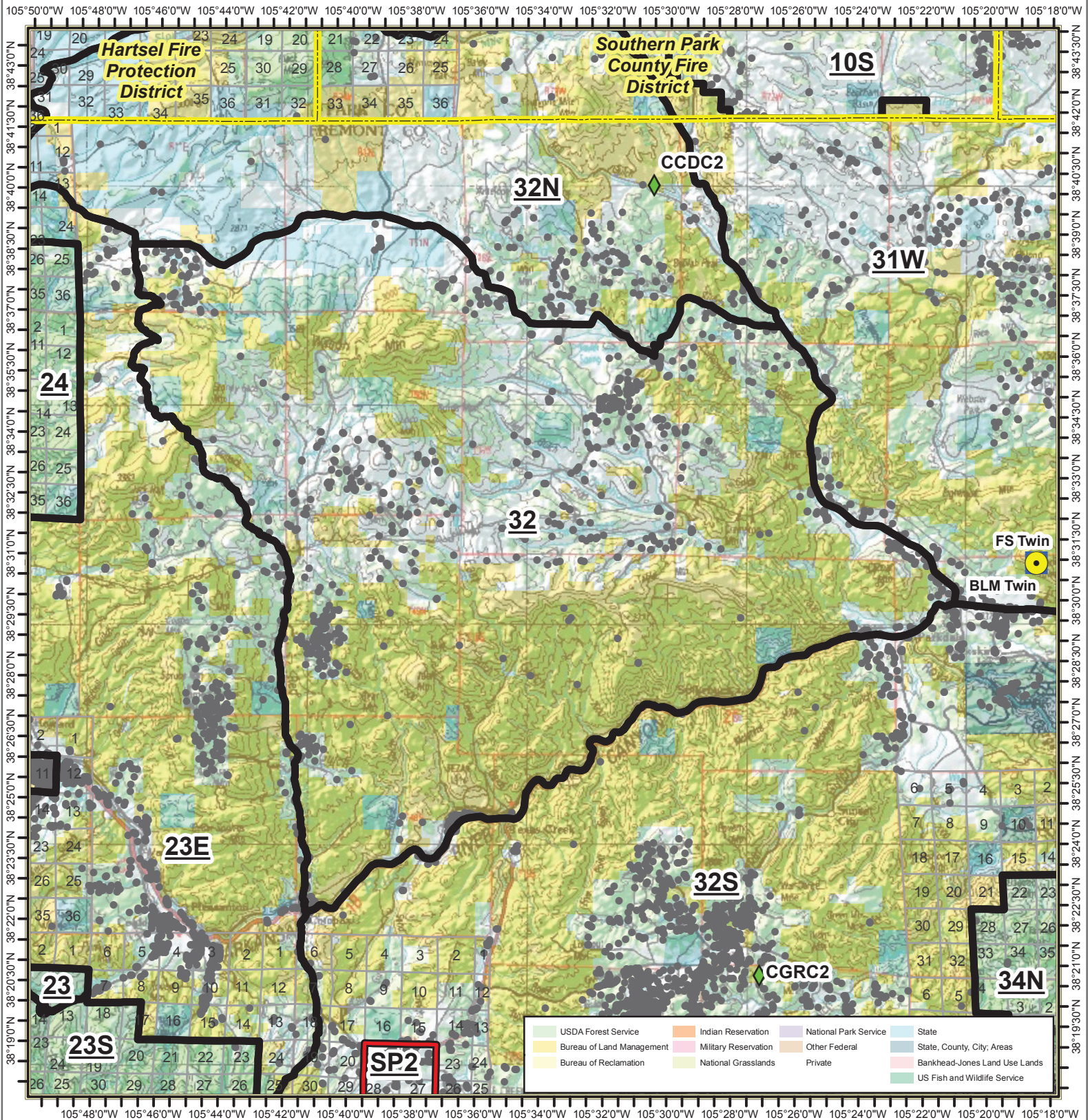
31W-Long Park

Page 91 of 101

- Structures
- Base-DIRECT
- Repeater
- Response Areas
- ◆ RAWS Stations
- Fire Protection Districts



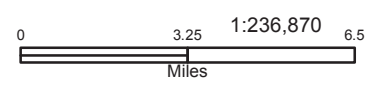
Date: 7/8/2019



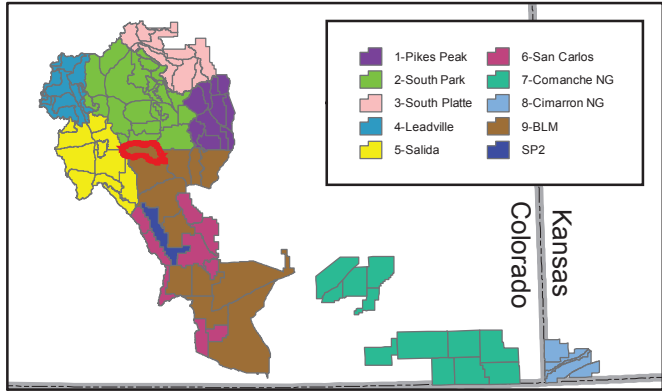
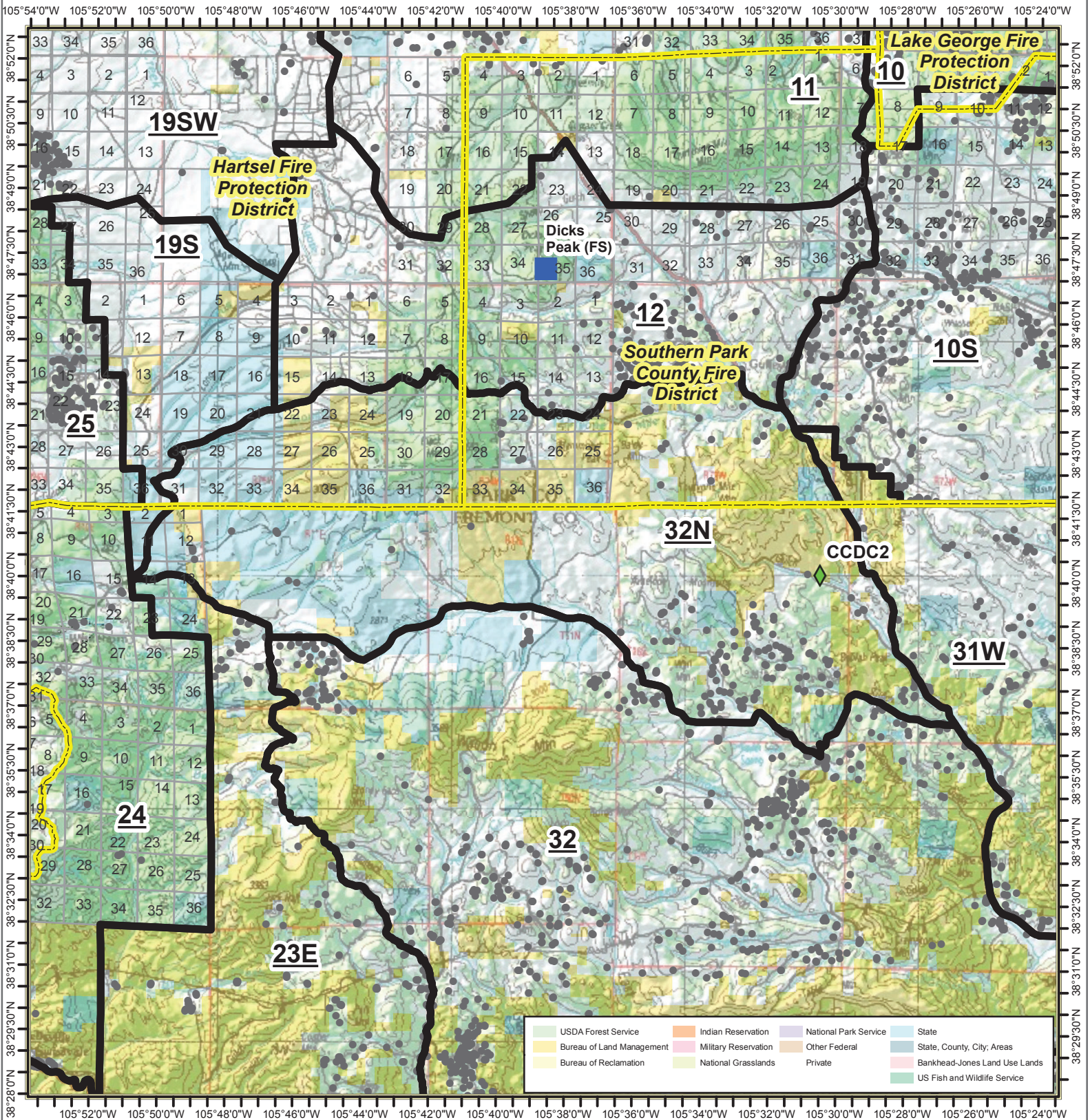
32-Green Mountain

Page 92 of 101

- Structures
- Base-DIRECT
- Repeater
- Response Areas
- ◆ RAWS Stations
- Fire Protection Districts



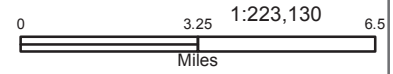
Date: 7/8/2019



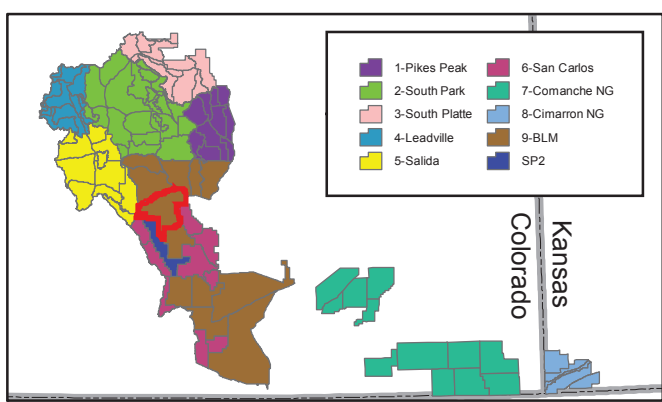
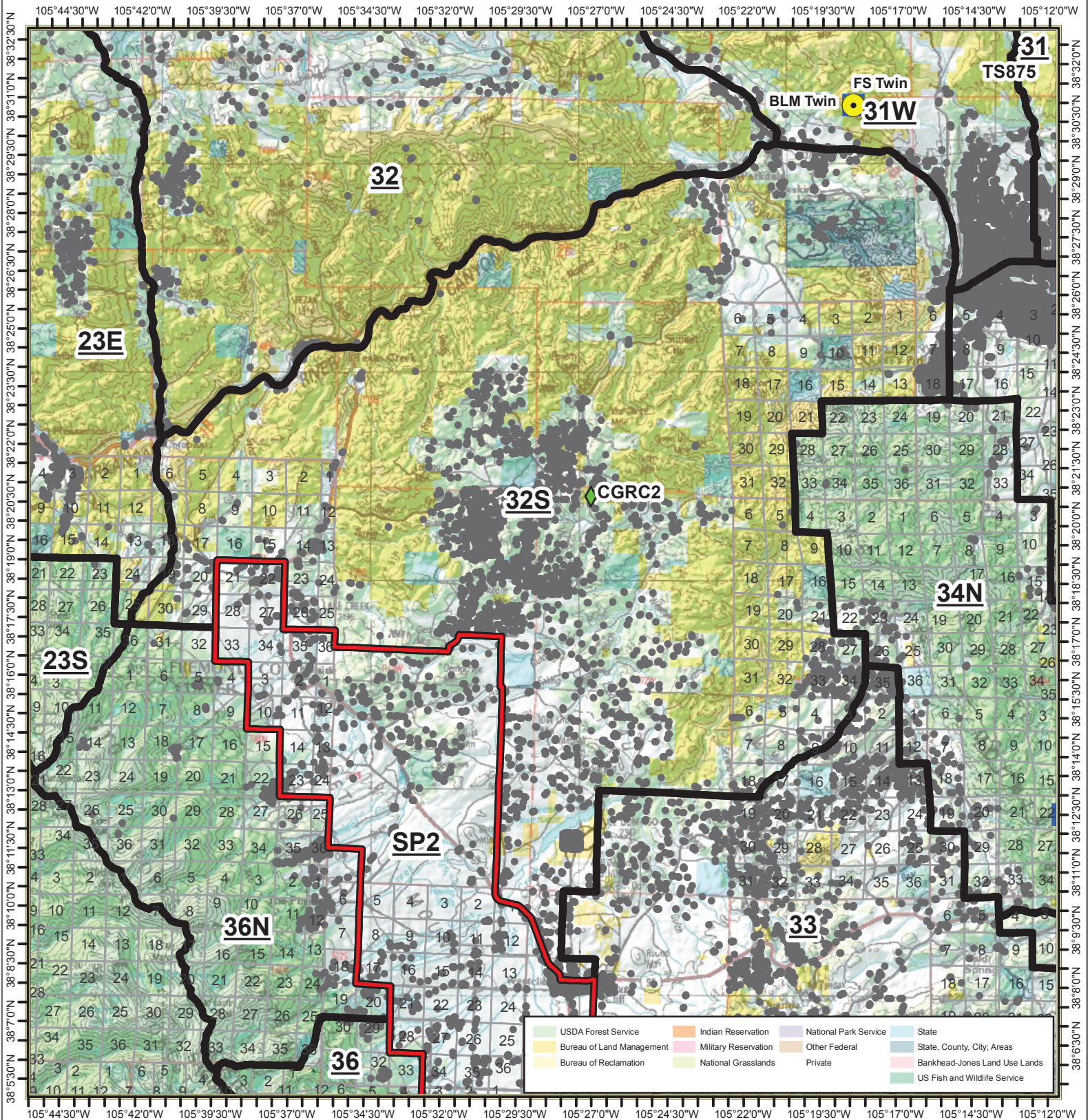
32N-Meadow Gulch

Page 93 of 101

- Structures
- Base-DIRECT
- Repeater
- Response Areas
- ◆ RAWS Stations
- Fire Protection Districts



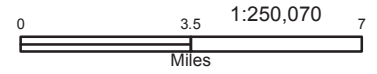
Date: 7/8/2019



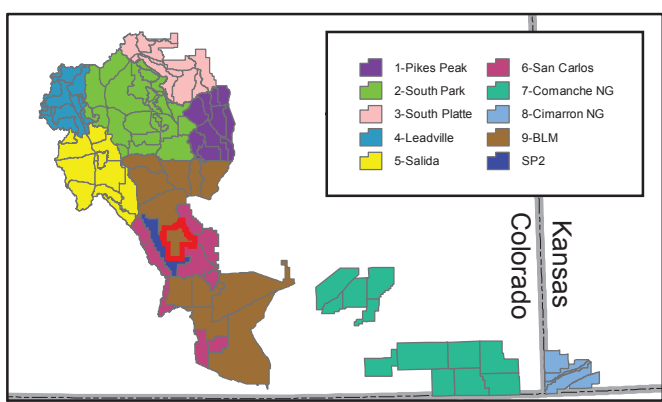
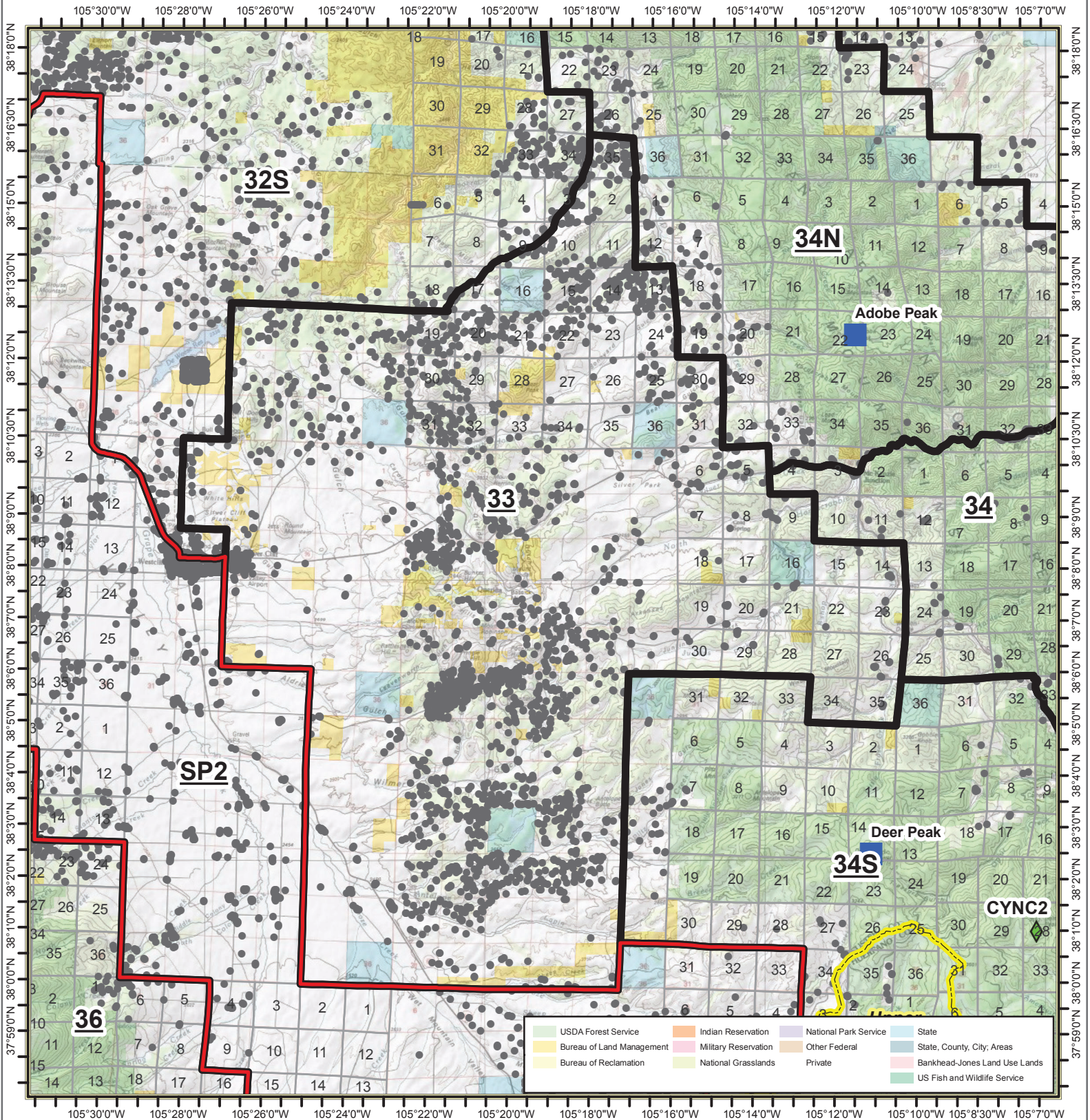
32S-Indian Springs

Page 94 of 101

- Structures
- Base-DIRECT
- Repeater
- Response Areas
- RAWS Stations
- Fire Protection Districts



Date: 7/8/2019



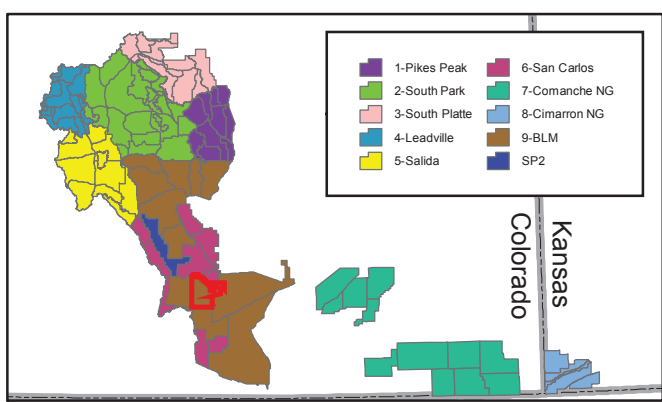
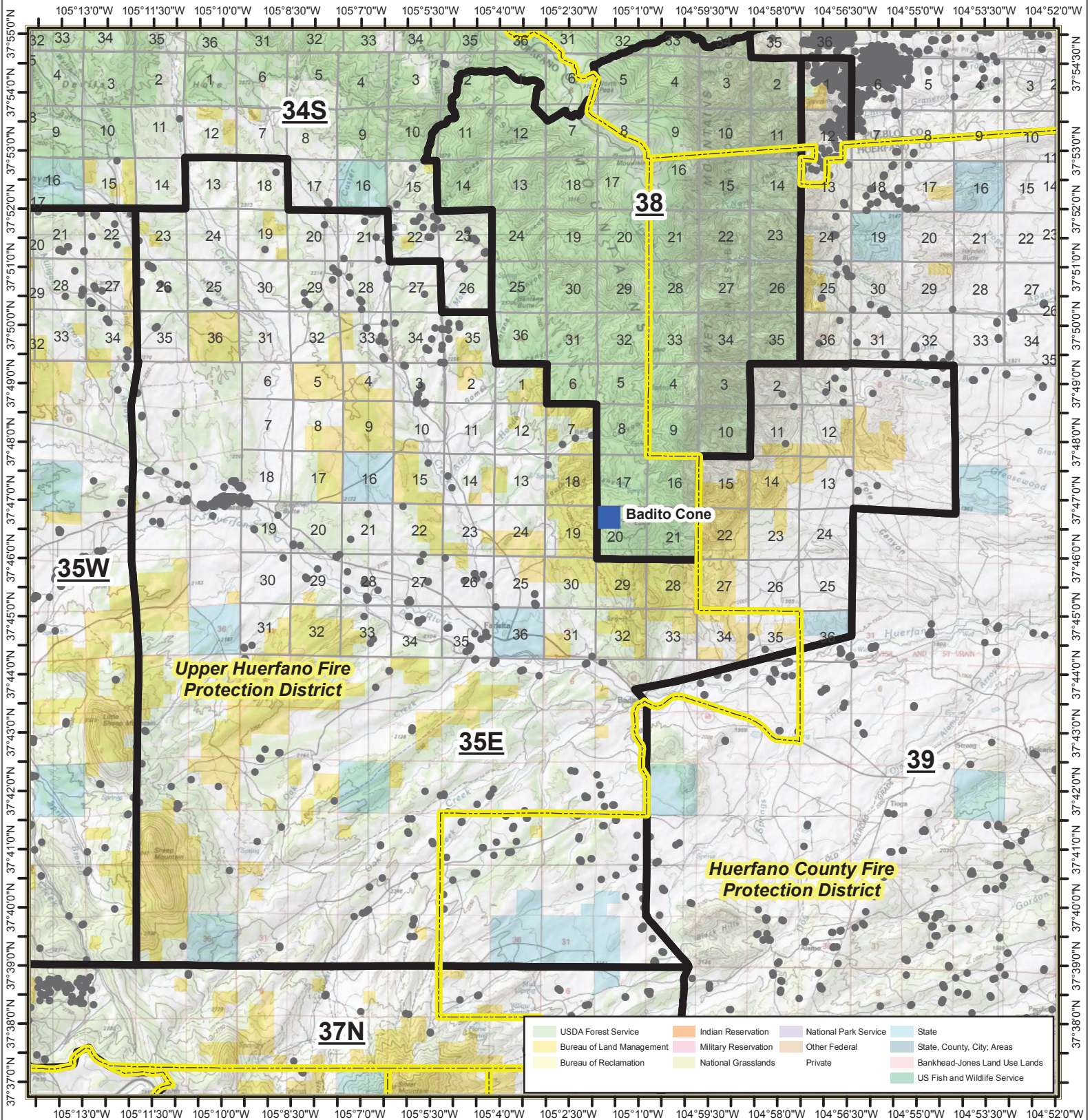
33-Mount Tyndall

Page 95 of 101

- Structures
- Base-DIRECT
- Repeater
- Response Areas
- ◆ RAWS Stations
- Fire Protection Districts



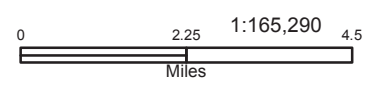
Date: 7/8/2019



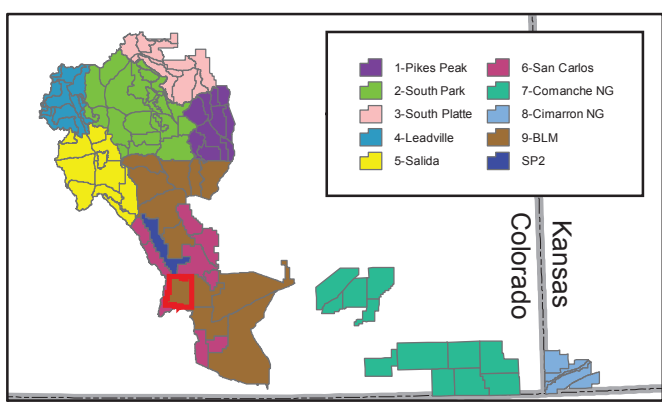
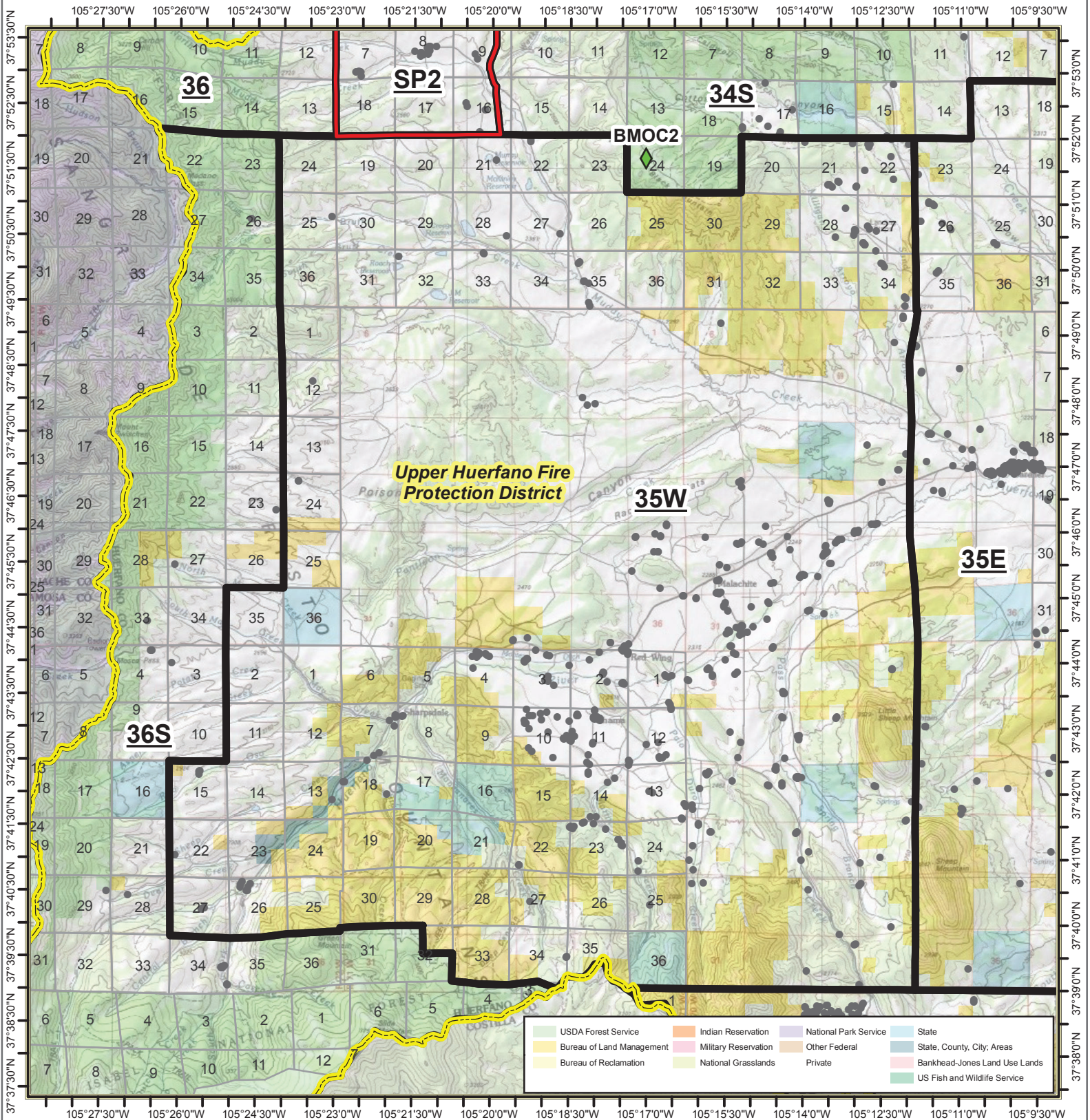
35E-Gardner

Page 96 of 101

- Structures
- Base-DIRECT
- Repeater
- Response Areas
- ◆ RAWS Stations
- Fire Protection Districts



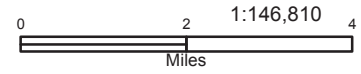
Date: 7/8/2019



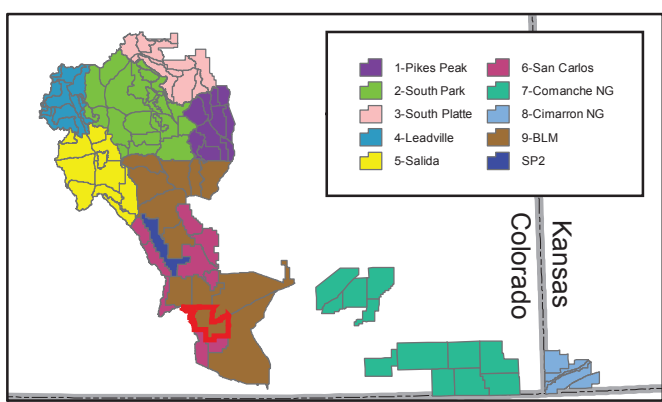
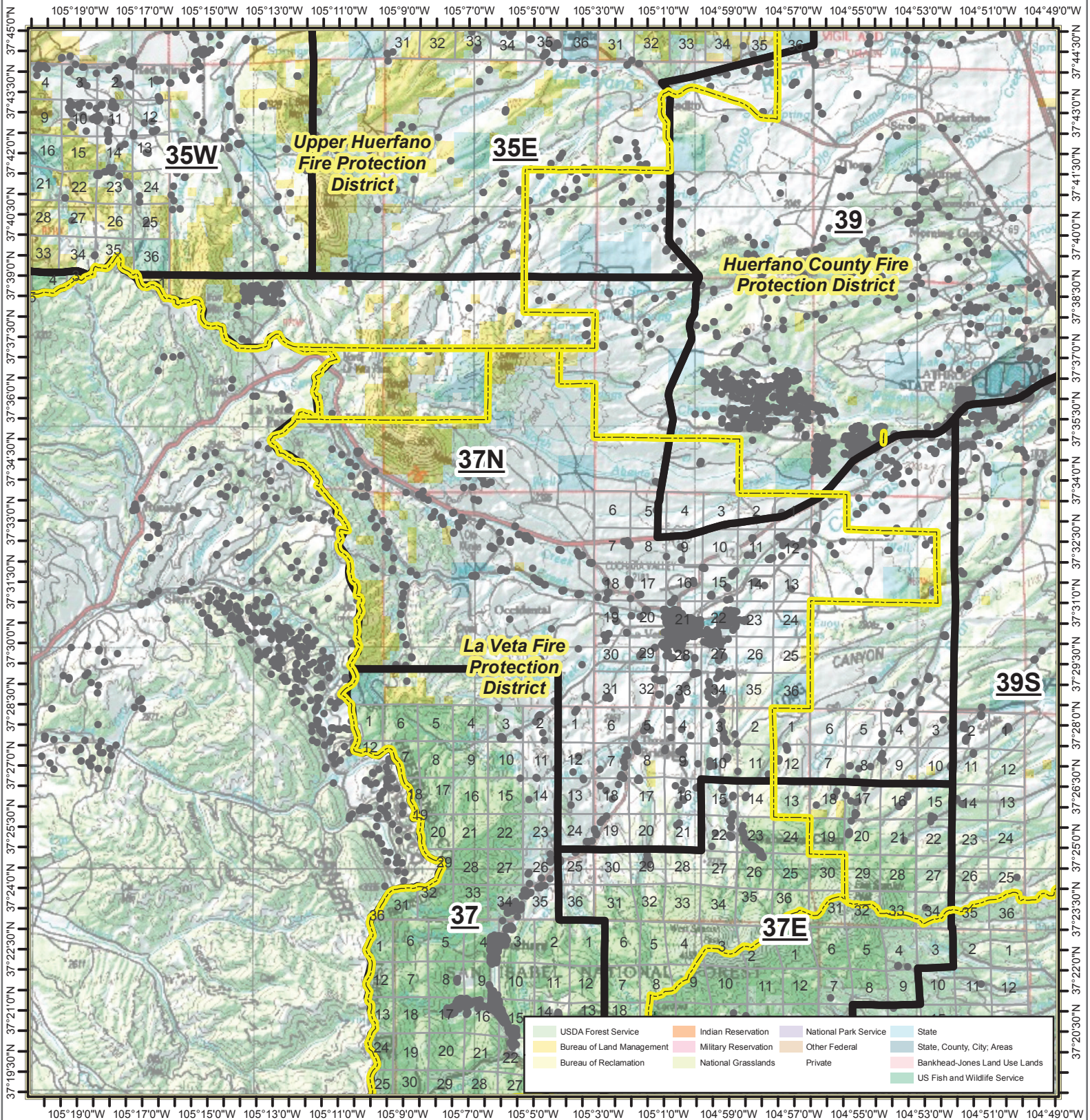
35W-Poison Canyon

Page 97 of 101

- Structures
- Base-DIRECT
- Repeater
- Response Areas
- ◆ RAWS Stations
- Fire Protection Districts



Date: 7/8/2019



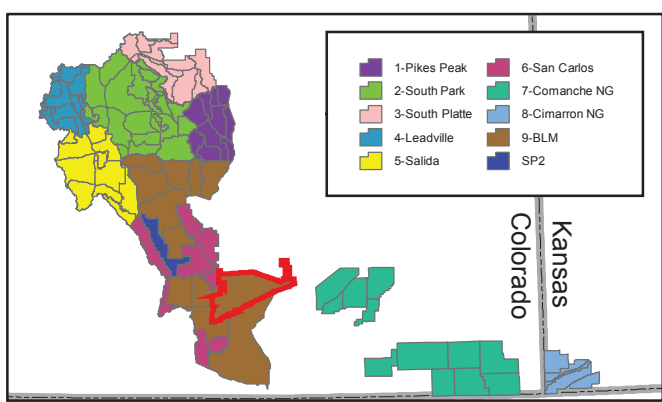
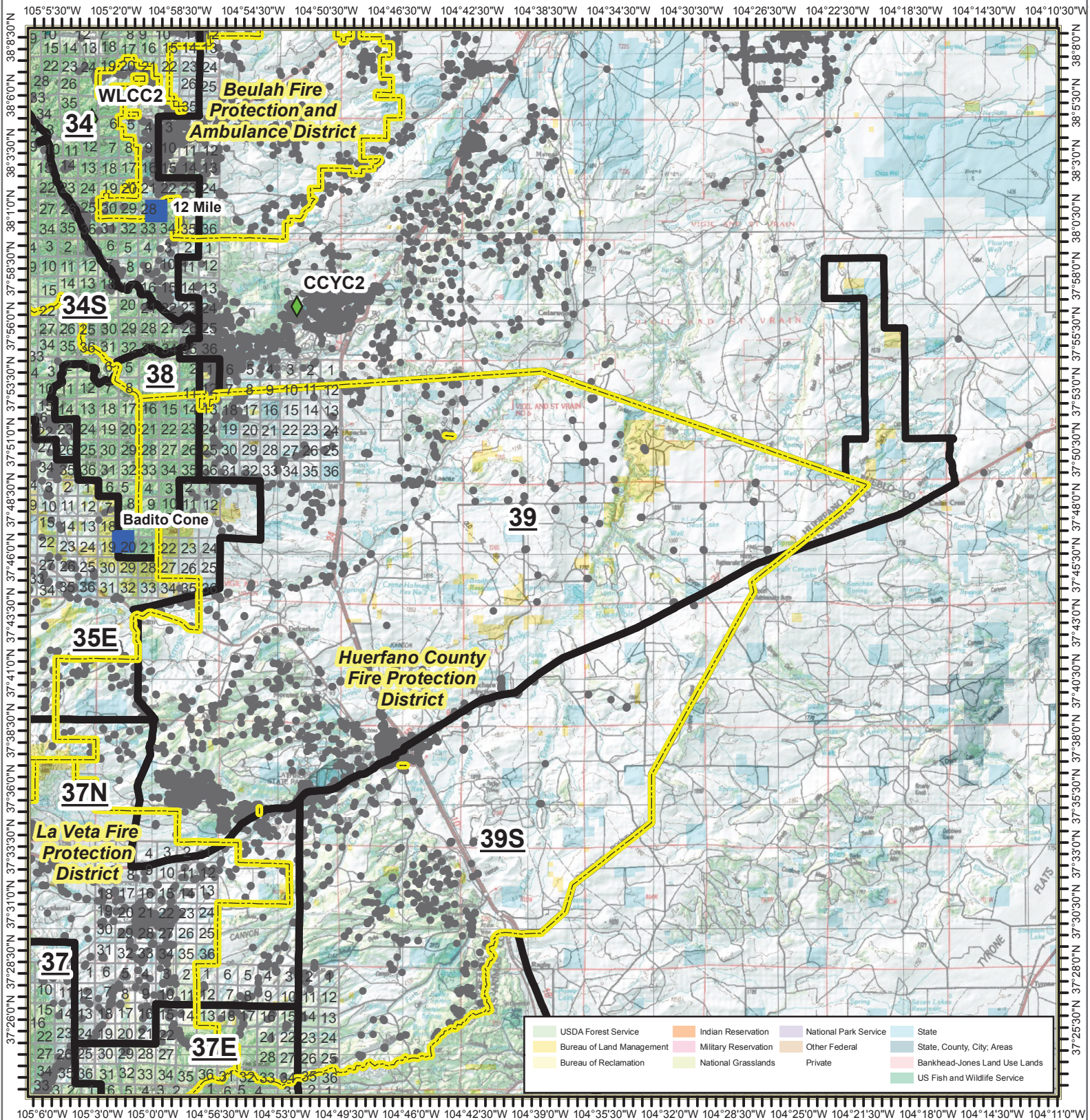
37N-La Veta

Page 98 of 101

- Structures
- Base-DIRECT
- Repeater
- Response Areas
- ◆ RAWS Stations
- Fire Protection Districts



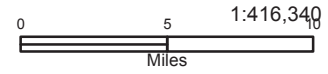
Date: 7/8/2019



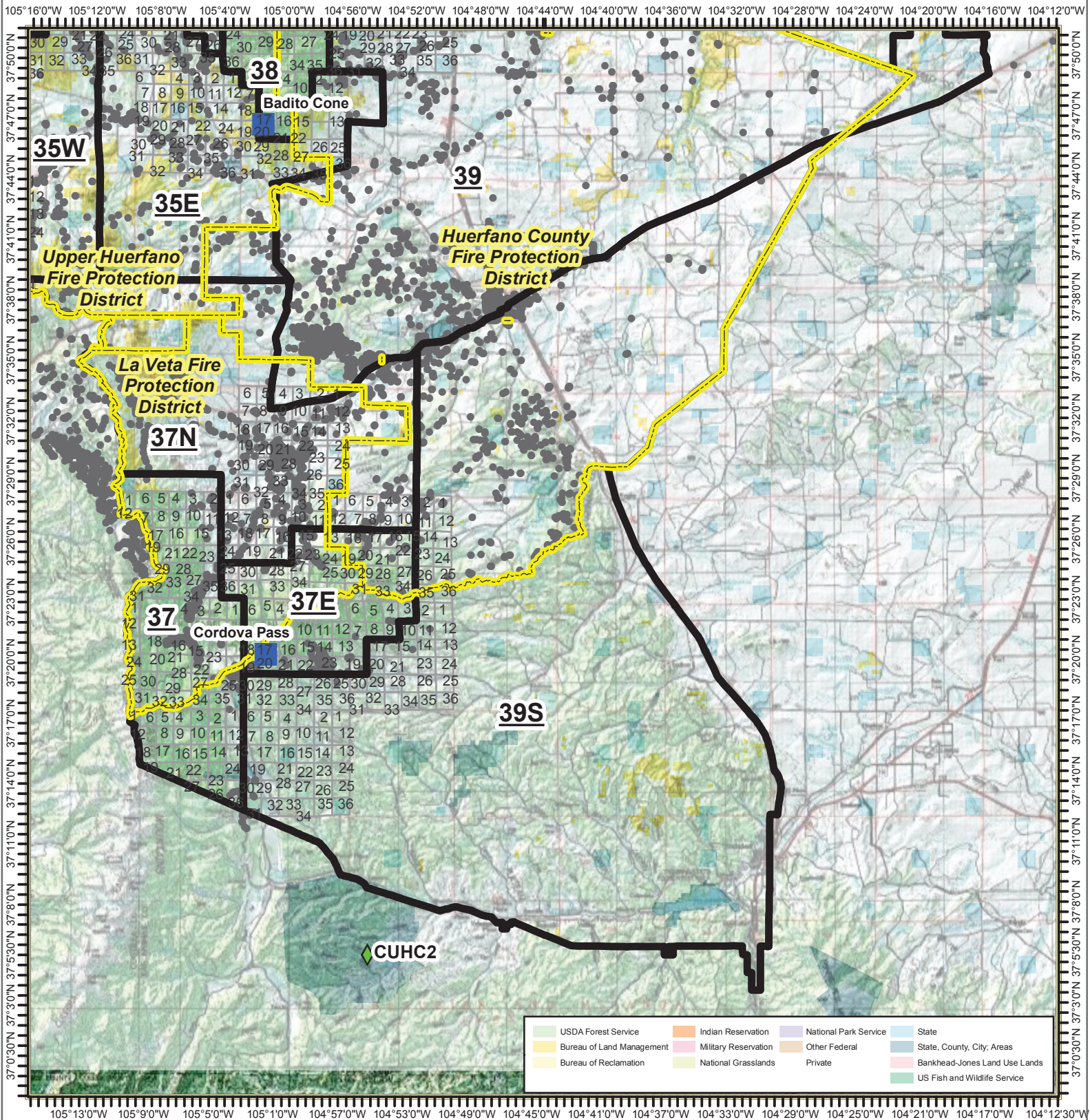
39-Cucharas Reservoir

Page 99 of 101

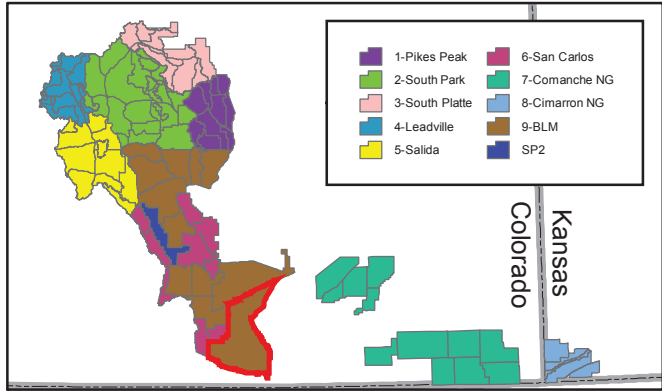
- Structures
- Base-DIRECT
- Repeater
- Response Areas
- ◆ RAWS Stations
- Fire Protection Districts



Date: 7/8/2019



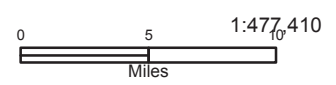
USDA Forest Service	Indian Reservation	National Park Service	State
Bureau of Land Management	Military Reservation	Other Federal	State, County, City, Areas
Bureau of Reclamation	National Grasslands	Private	Bankhead-Jones Land Use Lands
			US Fish and Wildlife Service



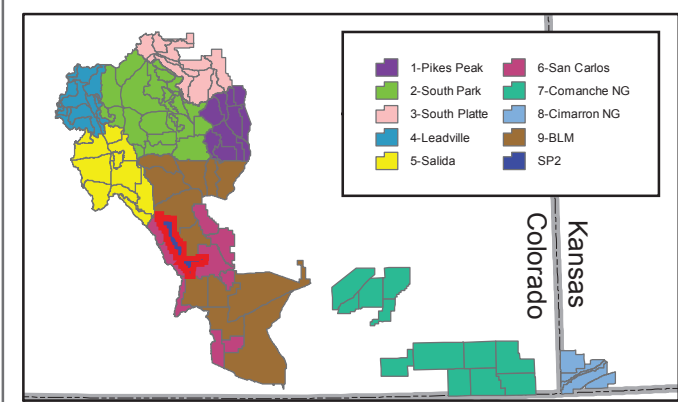
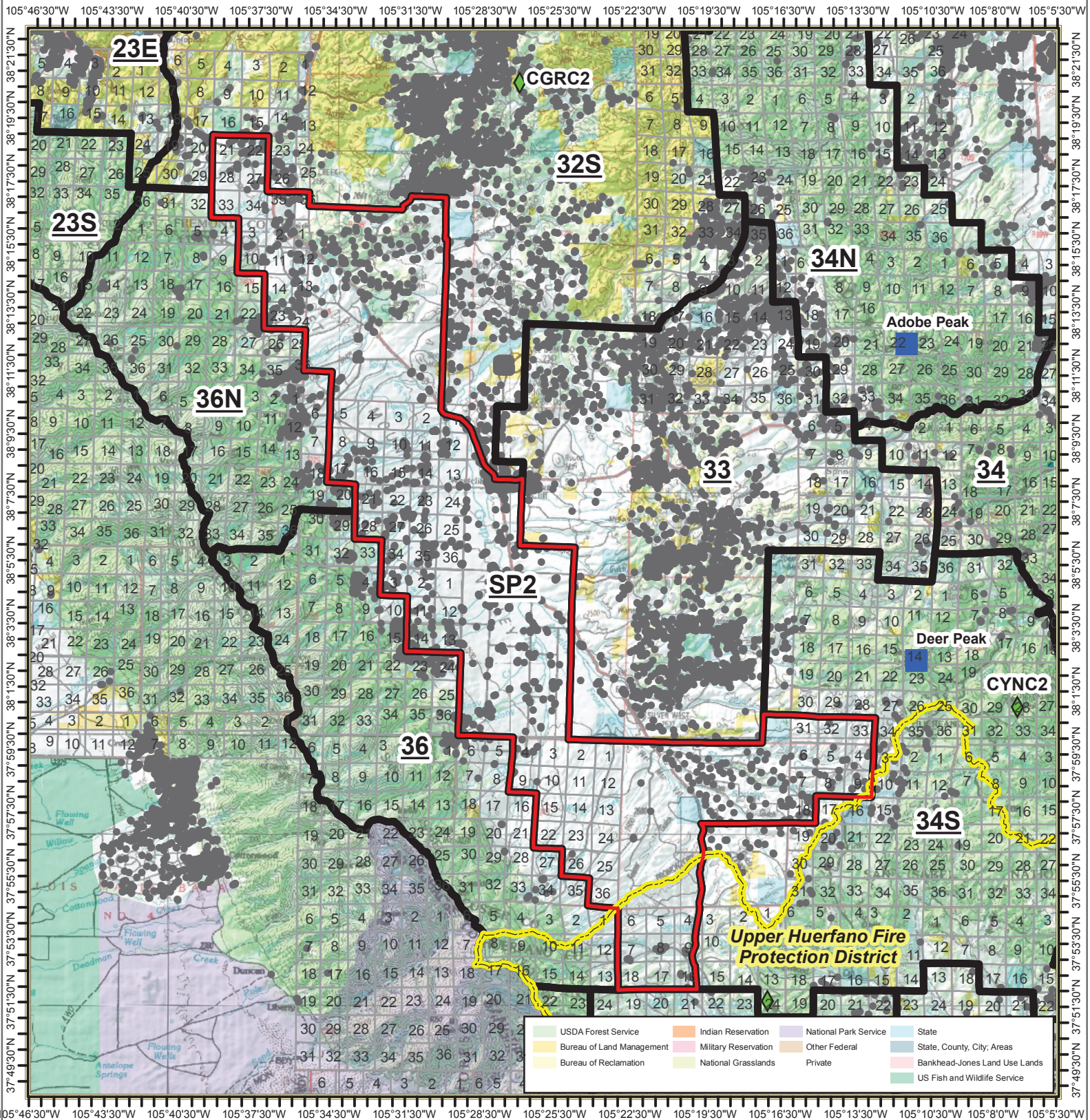
39S-Aguilar

Page 100 of 101

- Structures
- Base-DIRECT
- Repeater
- Response Areas
- ◆ RAWS Stations
- Fire Protection Districts



Date: 7/8/2019



SP2-Wet Mtn Valley

Page 101 of 101

- Structures
- Base-DIRECT
- Repeater
- Response Areas
- ◆ RAWS Stations
- Fire Protection Districts



Date: 7/8/2019